



U.S. Immigration and Customs Enforcement Criminal Justice Stakeholder Forms Fact Sheet

Enforcement and Removal Operations

ABOUT ICE

U.S. Immigration and Customs Enforcement (ICE) is the principal investigative arm of the U.S. Department of Homeland Security (DHS) and the second largest investigative agency in the federal government. ICE Enforcement and Removal Operations (ERO) is comprised of agents, officers, and professional staff who are sworn to enforce the nation's immigration laws in a fair and effective manner.

ERO MISSION STATEMENT

To identify, arrest, and remove aliens who present a danger to national security or are a risk to public safety, as well as those who enter the United States illegally or otherwise undermine the integrity of our immigration laws and our border control efforts. ERO upholds America's immigration laws at, within and beyond our borders through efficient enforcement and removal operations.

WHAT IS THE PURPOSE OF THESE FORMS?

While executing its mission, ICE takes enforcement action against aliens who may also have obligations within the criminal justice system. These actions may conflict with state or local criminal justice proceedings, which may create a need for additional information sharing with state and local authorities.

For example, an alien may miss a court hearing and forfeit bond money or be absent from a meeting with a parole officer and be subject to penalties as a result.

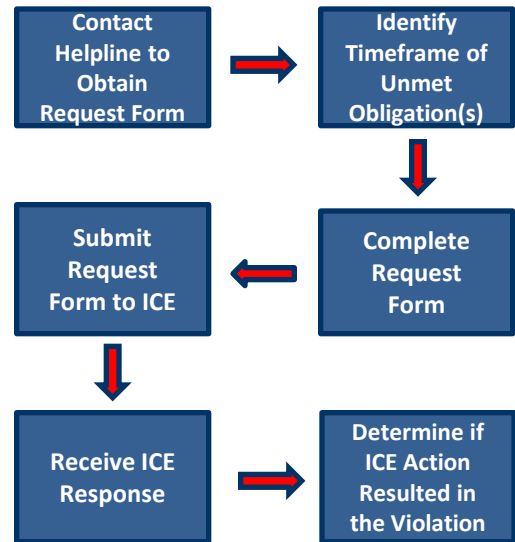
ICE developed these **Criminal Justice Stakeholder Forms** to give criminal justice professionals access to relevant and reliable information from ICE when working with aliens in these circumstances. The information provided through this process can be used to verify that the alien's absence from court or other failure to meet a criminal justice obligation was due to ICE enforcement, detention, or removal.

REQUEST FORM

If you want information on an individual who failed to meet a criminal justice obligation and you suspect it was the result of ICE immigration enforcement:

- Call the Community and Detainee Helpline (Helpline) [1-888-351-4024](tel:1-888-351-4024) and ask the operator for a criminal justice stakeholder **Request Form**.
- Complete and submit your **Request Form** to ERO.Outreach@ice.dhs.gov or by fax or standard mail.
- Helpline personnel will process your request and issue a **Certification Form**, which, if approved, will provide the requested information.

Forms process overview:



COMMITMENT TO COLLABORATION

ICE ERO is dedicated to ensuring the public is fully informed of the agency's immigration enforcement efforts. In support of the agency's mission, ICE ERO is committed to transparency, collaboration and resolving concerns with external stakeholders, particularly the agency's criminal justice partners.

Community Outreach for Enforcement and Removal Operations

Community & Detainee Helpline: **1-888-351-4024**

E-mail: ERO.Outreach@ice.dhs.gov

Web site: www.ice.gov/about/offices/enforcement-removal-operations/ero-outreach/